

# Recyclables

Free



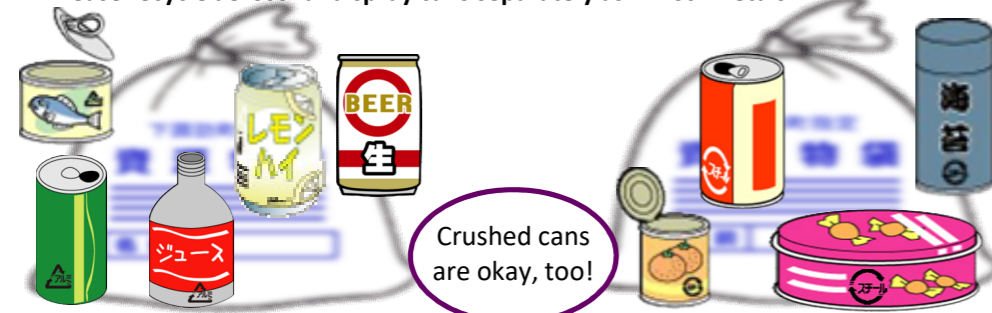
Recyclable items will be reused and recycled

- Collection takes place once a week. **Different materials are collected each week, so please be sure to check the Recycling Calendar to confirm the recyclables for the week.**
- Designated recycling bags are available in 10L and 22 L sizes. PET Bottles, polystyrene (including polystyrene food trays) and grass and leaves intended for compost can also be put out in Shimosuwa's OLD Burnable Waste garbage bags.
- Please separate each material into different bags (except used batteries, light bulbs, and fluorescent tubes, which may be placed together in the same bag). **Bags with mixed materials will not be collected!**
- **Please do not put out materials for collection after 8:00 AM. Collection of different materials takes place separately. Putting out your recycling after 8:00 simply because not ALL materials have been collected does not mean it will be collected, and will be an inconvenience to both yourself and others.**

## ① Aluminum cans アルミ

## ② Steel cans スチール

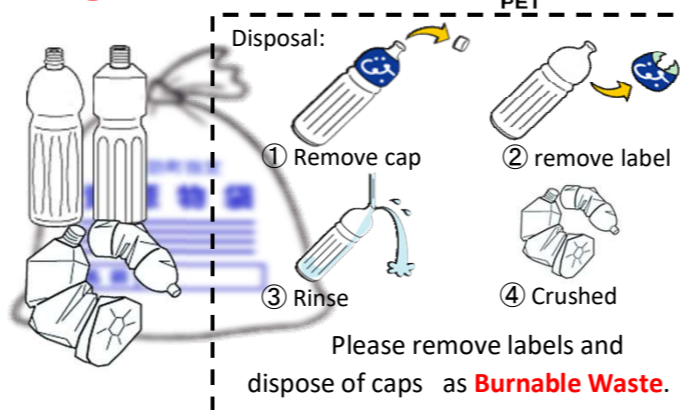
- Please rinse before disposal, and **separate steel and aluminum cans.**
- Since **caps** from aluminum juice bottles and the like are affixed with non-metallic seals, please **recycle these separately as "Misc. Metals."**
- Place any lids inside cans
- **Please recycle aerosol and spray cans separately as "Misc. Metals."**



Collection Week 1 Week 3

Collection Week 2 Week 4

## ③ PET Bottles PET



\*PET bottles can also be put out for collection in Shimosuwa's OLD Burnable Waste garbage bags.

Collection Week 1 Week 3

## ④ Clear ⑤ Brown and ⑥ Other Glass Bottles

- Glass bottles used for food, drink, pharmaceuticals, and cosmetics.
- Please sort as bottles even if they are broken.
- Remove caps or nozzles for separate disposal as appropriate and rinse glass before disposal.
- **Please dispose of bottles with encrusted contents (nail polish, etc.) separately as Landfill Waste.**
- **Please dispose of glass or ceramic tableware separately as Landfill Waste.**
- If a bottle is painted or dyed, you can check the color of the glass from the lip of the bottle.



Collection Week 1

Collection Week 2

Collection Week 3

\* Some empty bottles (liquor and beer bottles) may be returned to their point of purchase. Please try to return these bottles to participating dealers.

## ⑦ White trays

## ⑧ Coloured Trays & Styrofoam

- Polystyrene materials that are fragile enough to be broken by hand.
- Please remove any film, wrap, tape, or labels and wash before disposal.
- **Instant ramen bowls and trays made of other materials (such as plastic) are Burnable Waste.**
- Polystyrene can also be put out for collection in Shimosuwa's OLD Burnable Waste garbage bags.

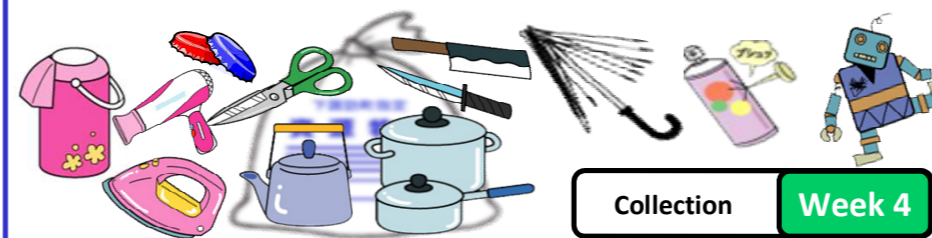


Collection Week 1 Week 3

Collection Week 1 Week 3

## ⑨ Misc. Metals & Small Appliances

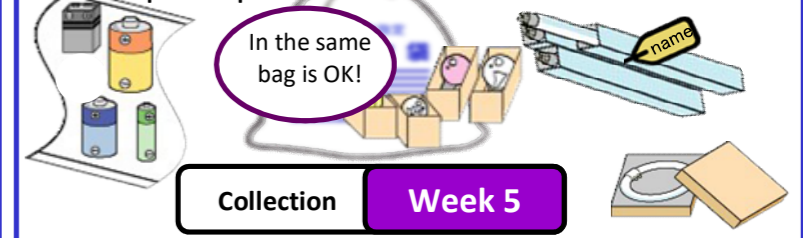
- **Small electrical and battery-operated devices that will fit into an official town Recycling bag.** Please delete any personal data from mobile phones etc..
- Small appliances may be placed together in the same bag with misc. metals.
- Small electrical devices that will not fit into an official town recycling bag may be disposed of free of charge by either bringing them directly to the Town Sanitation Center or Monthly Collection in Akasunasaki Park (for specified consumer electronics, see the reverse to contact a disposal service.)
- Please wrap blades and other sharp items in paper before disposal.
- **Be sure to use up and puncture spray canisters before disposal**
- Please dispose of vacuum bottles (Thermos, etc.) as misc. metals



Collection Week 4

## ⑩ Used Batteries, Light Bulbs & Fluorescent Tubes

- While used batteries, light bulbs & fluorescent tubes may be placed together in an official recycling bag, please place batteries in a **clear bag** so that the contents are visible. Also, if possible, please dispose of light bulbs and fluorescent tubes in their original packaging.
- **Fluorescent tubes that do not fit into official town recycling bags should be placed into their sleeves and tied with string, with your name attached.**
- **Please return button type cell batteries and rechargeable battery to the point of purchase where this service is available.**



Collection Week 5

## ⑪ Tree Clippings, Grass, & Fallen Leaves

- Pruned branches and plant stalks should be trimmed to less than 60cm in length and 25cm around, tied into bundles of around 30cm in diameter, and put out for collection with your name on a tag.
- **Please dispose of poisonous, diseased, or bug-infested materials separately as Burnable Waste.**
- **Do not include any scrap construction waste!**
- Please remove any dirt, rocks, as well as any plastic or wires from grass, fallen leaves, and garden waste, and then put them out for collection in a town Recycling bag.
- Grass clippings and leaves can also be disposed of in Shimosuwa's OLD Burnable Waste garbage bags.



Collection Week 4 (May through November Only)

## ⑫ Hard Plastics

- Items made of rigid plastic material stiffer than a credit card and not marked with the "Recyclable Plastic" logo
- Please separate and remove any non-plastic parts or components for disposal as appropriate
- Please dispose of any materials with metal that cannot be removed as Misc. Metals
- Please refer to the Recycling Calendar for monthly collection dates.



Materials with the "Plastics" label should be sorted and disposed of as **Burnable Waste!**

Monthly Collection (third Sunday of each month) in Akasunasaki Park 9:00 AM to 11:00 AM

# Fabric

Free

- Anything reusable as second-hand items, such as clothing, towels, sheets, and blankets, as well as hats, shoes, bags, belts, and stuffed toys
- Please tie materials securely in a clear plastic bag.

## ⑬ Used Fabric (Clothing, towels, blankets, bags, etc.)

Items collected Any fabric items that can be reused!

- Reusable items such as clothing, towels, sheets, and blankets, as well as hats, bags, belts, and stuffed toys.
- Please place shoes in a separate bag when leaving for collection.
- Any material and for any season. Since items will be reused as second-hand clothing, please wash them first, and do not put out any moldy or insect-eaten items.



Tie items into a transparent plastic bag!

**Not collected** \*Please dispose of the following as **Burnable Waste** or **oversized waste**

- Moldy or moth-eaten fabrics
- Items stained with oils or paints, etc.
- Throw pillows, zabuton, cushions
- Futon mattresses, pillows
- Carpets, rugs
- Fabric scraps
- Long boots
- Mattresses (without springs)
- Electric blankets
- Suitcases, carrying cases
- Shoes, boots

Please use the collection boxes at the **Station East Side Recycling Station**, the **Hoshigaoka Used Paper and Fabric Recycling Station**, or the **Library Fabric Collection Box**.

## Recycling Stations (Collection boxes and containers)

- To reduce the amount of burnable garbage and reuse and recycle resources, the town has established collection stations where materials can be easily disposed of at any time.
- This recycling station stands up by the user's moral.**
- Obey rules.**
- Don't throw away the one which isn't in collection item.**
- Don't do vicious act.**

### Station East Side Recycling Station

- Please when a container is full do not spend it.
- Please never put a thing around the container.
- When you throw away an a large quantity of resources thing ,please bring it into Sanitation Center.
- Please be sure to remove a cap of a PET bottle and a label.
- Please be careful not to make a sound at night.
- Please be considerate to user of the parking lot.

Collected Items: See details under

- |                               |                       |
|-------------------------------|-----------------------|
| ① Aluminum cans               | ④ Clear glass         |
| ② Steel cans                  | ⑤ Brown glass         |
| ③ PET bottles                 | ⑥ Other colored glass |
| ⑦ White trays                 |                       |
| ⑧ Colored trays & polystyrene |                       |
- 

- ⑬ Used Fabrics
- ⑭ Newspapers
- ⑮ Cardboard
- ⑯ Cartons
- ⑰ Shredded Paper
- ⑱ Other Paper

24-hour access

### Library Fabric Collection Box

- Located next to the Shimosuwa Town Library Parking Lot.
- Use only for the items intended **AND NOT FOR LIBRARY BOOK RETURNS!**

Collected Items: See details under

⑬ Used Fabrics

### Hoshigaoka Used Paper and Fabric Recycling Station

Collected Items: See details under

- ⑬ Used Fabrics
  - ⑭ Newspapers
  - ⑮ Cardboard
  - ⑯ Cartons
  - ⑰ Shredded Paper
  - ⑱ Other Paper
- 

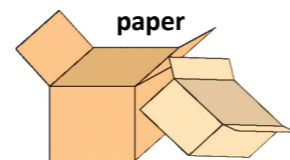
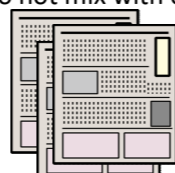
# Paper

Free

- In case of rain or snow, please either refrain from bringing these materials to the local collection location or else protect them from the elements by placing them in a clear plastic bag so the contents remain visible.
- Please do not put out materials for collection after 8:00 AM. Collection of different materials takes place separately. Just because not ALL materials have been collected does not mean that anything you put out late will still be collected. **Putting out your recycling after 8:00 is a nuisance both for yourself and other people.**
- If papers cannot be tied into a bundle with string, please put them out for collection in an official town recycling bag.

## ⑭ Newspaper ⑮ Cardboard ⑯ Cartons ⑰ Shredded Paper

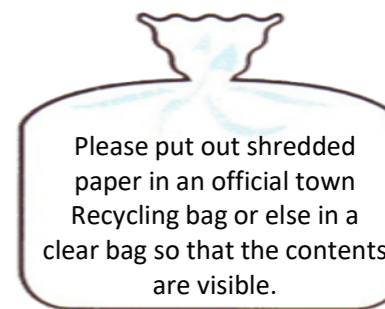
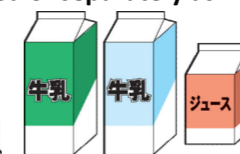
- Only newspapers and fliers (such as those that are distributed with newspapers)
- Do not mix with other papers.
- Please remove any tape or courier address labels.
- Please make sure corrugated cardboard is separated from board paper



## ⑰ Cartons



- Please wash the insides and cut open before putting out for collection.
- Cartons lined with foil should be disposed of separately as **Burnable Waste**.



Please put out shredded paper in an official town Recycling bag or else in a clear bag so that the contents are visible.

## ⑱ Other Paper (Books, Magazines, etc.)

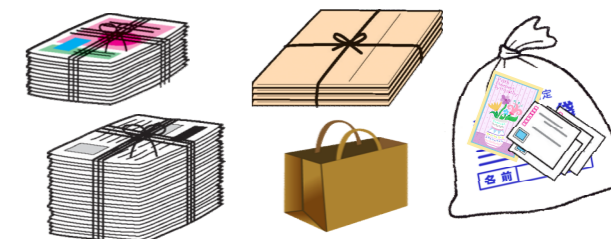
Magazines, books, pamphlets, paper packaging, postcards, etc. Binding method (staples, glue, etc.) makes no difference.

Be careful not to mix in any of the following, which **CANNOT BE RECYCLED**.

- \* Please dispose of the following separately as **Burnable Waste**
- Photo paper
- Plastic-coated paper
- Thermal paper (such as for receipts and fax)
- Pressure bonded postcards (like the confidential postcards issued by financial institutions)
- Papers affixed with paste
- Carbon paper, Non-carbon duplicate paper (like the kind used by delivery couriers)
- Scented paper
- Water-resistant paper
- Paper tableware (paper plates and cups, etc.)
- Paper soaked with water or stained with oil or food waste
- Used tissue or toilet paper, etc.



Tie papers securely in bundles according to type. Alternatively, please put them out for collection in a paper bag or official town recycling bag.



Collection Week 2

In addition to your local collection in Week 2 (paper only), please use the collection boxes at the **Station East Side Recycling Station** or **Hoshigaoka Used Paper and Fabric Recycling Station**

### Ink Cartridge Collection Boxes

- For used ink cartridges from major Japanese printer manufacturers
- Toner cartridges are not eligible.
- Please remove packaging before disposal.

[Locations] ○ Town Office ○ Cultural Center ○ Library  
○ Seniors' Welfare Center ○ Sanitation Center

Accepted Brands

- Brother
- Canon
- Lexmark
- Dell
- Epson
- HP



### Small Home Electronics Collection Boxes

- For small home electronics that fit into the opening (<40 cm x 20 cm)
- DO NOT use for metals or anything other than intended collection items

[Locations] ○ Friend YAZAKI  
○ Seniors' Welfare Center ○ Yutanpo Onsen ○ Town Office  
○ Cultural Center ○ Library ○ Sanitation Center

Collected Items: See details under ⑨ Small Appliances

Please note that access to these collection boxes may vary by location.

